

CASE STUDY

Managed SharePoint



"We have been involved in setting up collaborative environments within organisations to improve their business processes, work flow and functions. We have used other software in the past, but saw Managed SharePoint as something we could implement ourselves without having to use developers."

JAMES RIBAROVSKI
Principal
ER & Associates Pty Limited



ER & Associates is an expanding management services company delivering quality consulting and recruitment solutions to both the public and private sectors. The company was recently appointed to lead and project manage a number of major client ventures, including the development of a highly sophisticated information management system for a government division.

BUSINESS ISSUE

At the onset of the government venture, ER & Associates relied upon traditional communication methods such as phone calls, faxes, mail and meetings, as well as complex project management software and email, to distribute information between project members.

ER & Associates needed a solution that would allow it to more efficiently manage the communication between its staff in Sydney, its client, the client's end users, and the other contractors working on the project, all of whom are based at different locations throughout New South Wales. The specific business issues facing ER & Associates included:

- Project stakeholders are dispersed across a large geographic region, causing travel, accommodation and STD telephone expenses to increase significantly;

- Lack of control and growing confusion over various versions of documents being transmitted amongst certain project members and not others; and
- Staff are not readily available when travelling, leaving clients with no easy way of obtaining the most up to date project information.

BUSINESS SOLUTION

ER & Associates deployed WebCentral's Managed SharePoint as an online communication and collaboration interface between the parties involved in the project. Without the need to hire specialised developers or install additional software on each project member's computer, the managed solution was quick to market and had a clearly defined cost.

Members of the team are able to conveniently log into the interface through any web browser, giving ER & Associates' staff, the client, its end customers and all other stakeholders quick and easy access to all project information and documents.

- **Improved team collaboration, reducing the need for project managers to travel**

"Managed SharePoint has allowed our staff to focus on the delivery of the project requirements more efficiently and made us more accessible to our clients without having to travel."

- **Better document management**

"Rather than distributing multiple copies of the same information, we now just upload one copy to our SharePoint site. All project members can access the most up to date training documents, reports, meeting minutes and product development templates from the one place and at any time they like."

- **Site is easy to develop, modify and customise to suit specific requirements**

"You don't need to be a web developer to create a SharePoint site. All you need are some general computer skills."

- **Reduction in communication costs for phone calls, printing and postage**

"Our staff now use automated email notifications from within the SharePoint site to alert the project team, clients and stakeholders as new or updated information becomes available on the site."

Other WebCentral services utilised by ER & Associates:

- Business level web site hosting - www.erandassociates.com.au
- Managed SharePoint 75



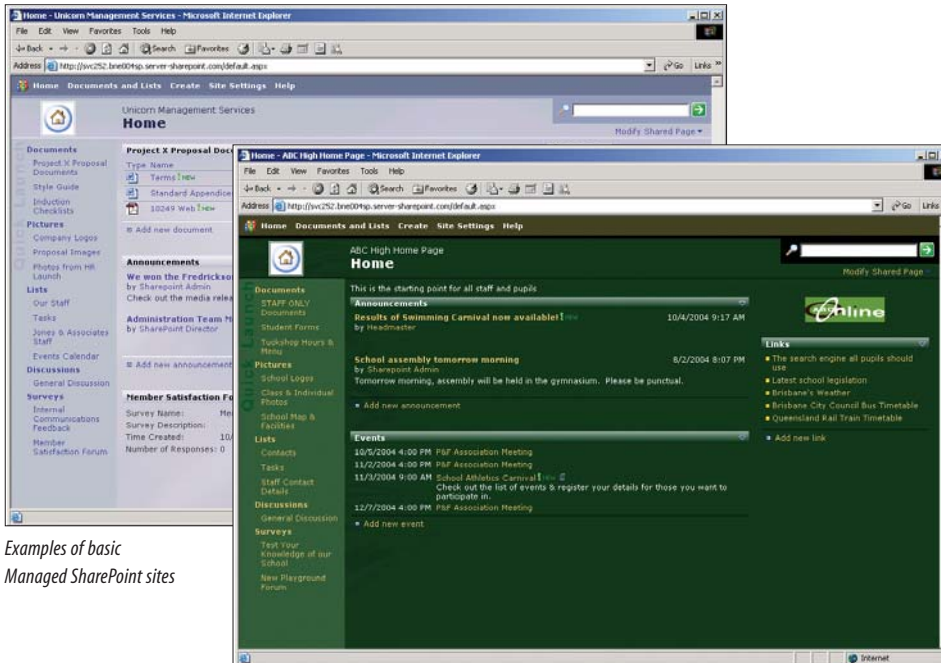
Managed SharePoint from WebCentral



Managed
SharePoint



WebCentral's Managed SharePoint is a flexible and cost-effective business tool that allows teams of all sizes to work together better. It gives teams the ability to quickly and easily create secure portal sites to share information and collaborate on documents, projects, meeting agendas, events, surveys, and other tasks in one central, online location.



Examples of basic Managed SharePoint sites

- No complicated set up procedures;
- Easy to use templates to design your site;
- Add, edit and delete site content using a web browser;
- Secure access restricted by individual usernames and passwords;
- Manage changes to documents more efficiently by tracking versions;
- Create document libraries for secure storage and easy access to all information about a project;
- Set up multiple sub-webs to use for different projects or groups of people;
- Compile meeting agendas and distribute minutes, hold discussion forums, make announcements, post events, conduct surveys, and a whole lot more.

HOW MUCH DOES IT COST?

Managed SharePoint is a hosted offering of Microsoft® Windows SharePoint Services 2.0 and is available in four product options designed to suit the differing needs of business. The key features and pricing are shown below.

	Managed SharePoint 75	Managed SharePoint 150	Managed SharePoint 500	Managed SharePoint 1000
Features				
Document and database storage space [^]	75MB	150MB	500MB	1,000MB
Mailboxes	25	50	100	200
Users	25	50	100	200
Sub-webs (sites)	5	5	Unlimited	Unlimited
Document & meeting workspaces	100	100	Unlimited	Unlimited
Monthly data transfer*	3,000MB	3,000MB	5,000MB	7,000MB
Support for a full domain name	✓	✓	✓	✓
Support for Domain Specific SSL Key	✗	✓	✓	✓
PRICING				
Pay Yearly¹	\$869	\$1,089	\$1,650	\$3,025
Pay Monthly²	\$79	\$99	\$150	\$275
Set-up fee	\$99	\$99	\$99	\$99

[^] Once your document and database storage space exceeds the allocated limit, an additional fee of \$0.099 per MB per month is charged.

* If your SharePoint site's data transfer exceeds the allocated amount per month an additional fee of \$0.077 per extra MB per month is charged.

¹ Upfront payment of 12-month contract is required and is non-refundable if you terminate the service before the end of the term.

² The monthly payment option is a month-by-month contract which can be terminated on one month's notice.

HOW CAN I GET MANAGED SHAREPOINT?

Call WebCentral's Sales & Service team on **FREEcall 1800 800 099** (ext. 2) or visit either www.webcentral.com.au/sharepoint for further information or to sign up online.

BRISBANE OFFICE
Level 5
100 Wickham Street
Fortitude Valley
QLD 4006 Australia

SYDNEY OFFICE
Level 14
111 Elizabeth Street
Sydney
NSW 2000 Australia

MELBOURNE OFFICE
Level 4
566 St Kilda Road
Melbourne
VIC 3004 Australia

PERTH OFFICE
Suite 7, Technology Park
16 Brodie Hall Drive
Bentley
WA 6120 Australia

SALES AND SUPPORT
Phone **1800 800 099**
Fax 1800 640 098
Email sales@webcentral.com.au
Web www.webcentral.com.au



ABN 87 084 429 318

Version: January 2006